



**RAM<sup>®</sup>**  
**MOUNTS**

Off-Road



# TABLE OF CONTENTS

**4 | About RAM® Mounts**

**6 | Solutions from Instagram**

**7 | How it Works**

**9 | Device Holders**

9 | Phone

15 | Tablet

21 | Camera

22 | GPS/SOS

23 | Radio/Mic

25 | weBoost

**27 | In-Vehicle Mounting**

28 | Windshield/Dashboard

33 | Cup Holder/Seat

34 | Grab Handle

35 | No-Drill™ Vehicle Bases

37 | Van Life/Entertainment

**39 | ATV/UTV**

**43 | Dirt Bike/Dual Sport**

43 | Top Solutions

45 | Tough-Mirror™

47 | Vibe-Safe™

**49 | Snowmobile**

**51 | Mountain Bike/E-Bike**

**53 | Accessories & Add-Ons**



# FEATURED



**32**

**RAM® TOUGH-TRACK™ FOR FORD BRONCO**



**45**

**RAM® TOUGH-MIRROR™**



**47**

**RAM® VIBE-SAFE™**



**SEEN IN THIS PHOTO:**

**RAM-HOL-UN11U**

RAM® X-Grip® Holder for 12" Tablets

**RAM-201U-D**

RAM® C Size Double Socket Arm

**RAP-354U-TRA1**

RAM® Track-Ball™ C Size

**RAM-TRACK-EXA-9BU**

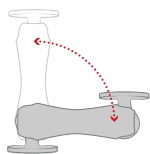
9" Black RAM® Tough-Track™



# ABOUT RAM® MOUNTS

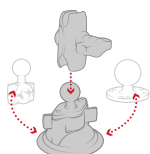
RAM® Mounts manufactures rugged and versatile mounting systems for phones, tablets, and other mobile devices that can be attached nearly anywhere. Unlike other mounts on the market, RAM® allows you to secure devices where you need them most. The unique design of the RAM® Mounts system provides quick installation, adjustability, strength, vibration damping, and durability—all at a low cost. Backed by a lifetime warranty, RAM® uses powder-coated, marine-grade aluminum with lightweight and high-strength composites, stainless steel hardware, and rubber balls.

## THE RAM® DIFFERENCE



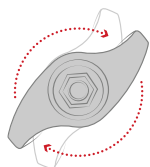
### PREMIUM DESIGN

The rubber ball and socket design of our mounting systems offers a secure hold, with near-infinite adjustability and vibration damping for the most demanding environments. With thousands of components trusted by users around the world, we've been able to design and develop mounting solutions that consumers and companies previously only dreamed were possible.



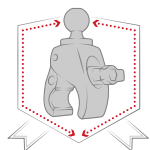
### CUSTOMIZABLE

Take your phone mount from your truck to your boat, or mix and match components to create your ideal mount. Because of the modularity of the RAM® system, you can customize your solution to fit your specific needs in almost any application.



### QUALITY MATERIALS

A premium design deserves the highest quality materials available, from rubber and stainless steel to high-strength composites and marine-grade aluminum. Our facilities— including powder coating, die casting, rubber injection molding, and shock and vibration testing—help us deliver on this promise to bring you inventive mounting solutions.



### LIFETIME WARRANTY

It's simple. Our reputation as the leader of premier mounting systems means if we build it, then we guarantee it. We're confident in the quality of our products, and with our warranty, you can be too.

## NATIONAL PRODUCTS INC. (NPI)

Introduced in 1995, National Products Inc. (NPI) quickly became the leading manufacturer of rugged and versatile mounting solutions. RAM® Mounts has grown to offer approximately 5,000 modular components—the most innovative product line of its kind for nearly any application and device, including phones, tablets, GPS systems, laptops, marine electronics, printers, radios, and much more.

In addition to RAM® Mounts, NPI is also the creator of award-winning IntelliSkin® sleeves and GDS® Technology™ products. IntelliSkin® sleeves ruggedize a wide range of consumer phones and tablets, while the GDS® Ecosystem™ provides users the ability to securely charge, dock, and sync devices in the most demanding environments.

NPI is proudly located in Seattle, Washington in the same neighborhood where the company was started.

## PARTNER WITH RAM® MOUNTS

Here at RAM® Mounts, we believe that unfathomable things are possible with ingenuity. With a portfolio of more than 5,000 SKUs paired with innovative engineers and in-house product experts, we have the tools and expertise needed to create solutions that you didn't know were possible. We have the ability to solve your mounting challenges quickly, efficiently, and cost effectively.

SEEN IN THIS PHOTO:

**RAM-B-189-PIV1-UN11U**

RAM® X-Grip® with Twist-Lock™  
Suction for 12" Tablets



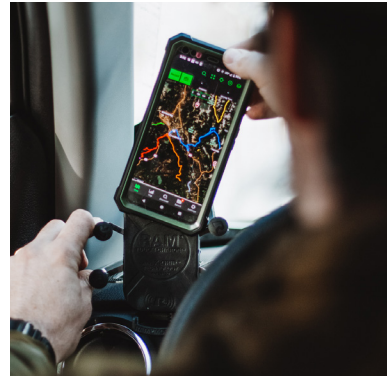
# SOLUTIONS FROM INSTAGRAM



@ADVENTURERSJOURNEY17



@WANDERING\_TURBO



@MTN.RETTY



@GHOSTPRO.LA



@JUGGERNAUTCASE



@ALTCAMP



@LIVINGSTONE\_MOTO



@EXTREMEMOTUS



@EGILRIDE



@KPXOVERLAND



@LEVEL10INDUSTRIES



@\_CHRISTIAN\_GUZMAN

# HOW IT WORKS

## DOUBLE BALL MOUNTS

Choose from a selection of holders, socket arms and ball bases to build a custom mount for your specific needs. Additional bases may be chosen so that your mount can support multiple devices, or can be transferred to alternate mounting locations.

1

### CHOOSE A HOLDER

RAM® offers a wide selection of holders for your specific device.

2

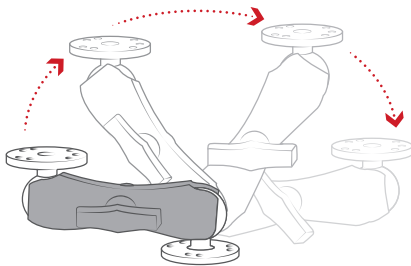
### CHOOSE AN ARM

Select an arm based on your desired length and placement.

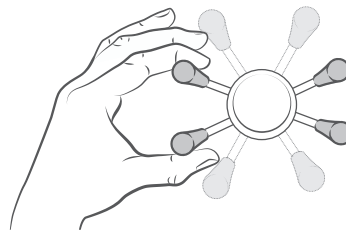
3

### CHOOSE A BASE

Select from a variety of bases to help secure your device where you need it.



Double ball and socket technology allows for near-infinite adjustability of your RAM® mounting system



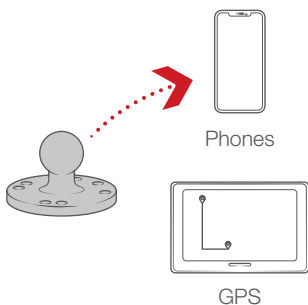
Highly adjustable



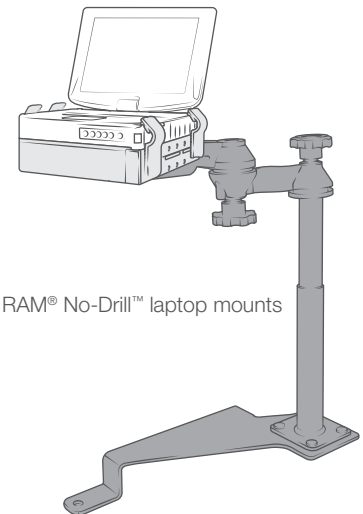
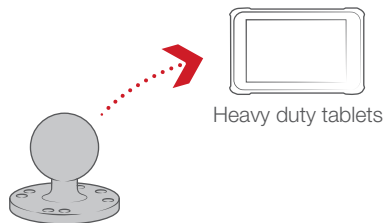
Vibration damping

### GENERAL RULE

B size ball & socket mounts are recommended for handheld devices, phones, GPS, and small tablets



C size ball & socket mounts are recommended for larger, heavy duty tablets, and are used in the RAM® No-Drill™ laptop mounts



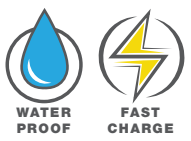


**1 HOLDERS**



**BEST SELLER**

**RAM-HOL-UN10BU**  
 RAM® X-Grip® for Large Phones



**RAM-HOL-UN12WB-1**  
 Wireless RAM® Tough-Charge™ with X-Grip® Technology



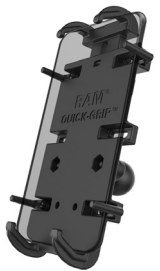
**RAM-B-202-GA76U**  
 RAM® Spine Clip Holder with Ball for Garmin Handheld Devices



**RAP-B-202U-GOP1**  
 RAM® Action Camera Universal Ball Adapter



**RAM-HOL-UN8BU**  
 RAM® X-Grip® Universal Holder for 7"-8" Tablets with Ball



**RAM-HOL-PD4-238AU**  
 RAM® Quick-Grip™ XL Holder

**2 SOCKET ARMS**



**RAM-B-201U-A**  
 2.42" Short Socket Arm



**RAM-B-201U**  
 3.73" Medium Socket Arm



**RAM-B-201U-C**  
 6" Long Socket Arm

**3 BASES**



**RAP-B-378U**  
 RAM® Flex Adhesive Ball Base



**RAM-B-202U**  
 RAM® Round Drill-Down Base



**RAM-B-238U**  
 RAM® Diamond Drill-Down Base



**BEST SELLER**

**RAM-B-224-1U**  
 RAM® Twist-Lock™ Suction Cup Base with Ball



**RAP-B-400U**  
 RAM® Tough-Claw™ Small Clamp Base with Ball



**RAP-B-354U-TRA1**  
 RAM® Track Ball™ with T-Bolt Attachment

MORE COMPONENTS AVAILABLE AT  
[RAMMOUNT.COM/COMPONENTS](http://RAMMOUNT.COM/COMPONENTS)

# DEVICE HOLDERS

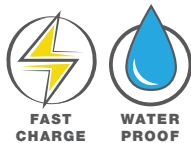
## PHONE WIRELESS CHARGING

EXPLORE WIRELESS CHARGERS

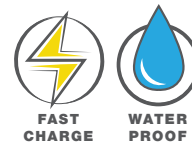
The RAM® Tough-Charge™ with RAM® X-Grip® Technology and RAM® Quick-Grip™ Wireless are the world's first patented, universal, waterproof wireless charging cradles for smartphones. Designed with spring-loaded technology, utilize the best parts of both the RAM® X-Grip® and RAM® Quick-Grip™ phone holders while pairing any smartphone with wireless charging capabilities. For added security and peace of mind, a safety tether is included that's recommended for outdoor applications. Available in a variety of mounting kits, ensure wireless charging capabilities across a wide range of vehicles.



RAM® Quick-Grip™ allows for one-handed docking



**RAM-B-166-UN12W-1**  
RAM® Tough-Charge™ Waterproof Wireless Charging Suction Cup Mount



**RAM-B-166-UN14W-1**  
RAM® Quick-Grip™ Waterproof Wireless Charging Suction Cup Mount

### DID YOU KNOW

RAM® Wireless Charging Phone Holders <sup>only</sup> have an adaptive charging system so you can adjust the position of your phone while maintaining the connection. <sup>without a case.</sup>

#### SEEN IN THIS PHOTO:

**RAM-B-166-UN14W-1**  
RAM® Quick-Grip™ Wireless Charging Suction Cup Mount

# PHONE WIRELESS CHARGING APPLE MAGSAFE®

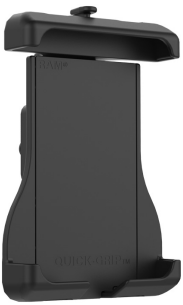
EXPLORE APPLE MAGSAFE® KITS



**RAM-B-202-AP-MAGU**  
RAM® Ball Adapter for  
Apple MagSafe



**RAM-B-166-AP-MAGU**  
Apple MagSafe Adapter with  
Suction Cup Mount



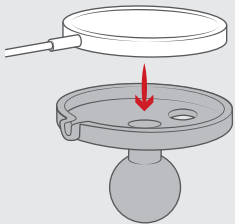
**RAM-HOL-UN15WBU**  
RAM® Quick-Grip™ for Apple MagSafe  
Compatible Phones



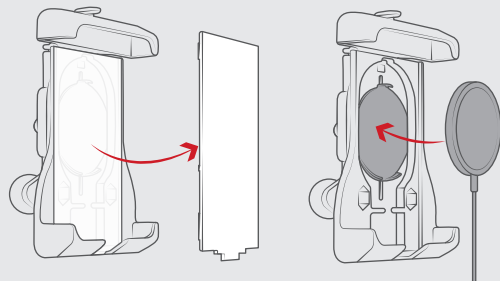
**RAM-B-166-UN15WU**  
RAM® Quick-Grip™ Suction Cup Mount for Apple  
MagSafe Compatible Phones



## FEATURES



Press-fit design to hold  
MagSafe® charger in place



Removeable backing plate to adjust the position of the  
MagSafe® charger

\*MAGSAFE IS A REGISTERED TRADEMARK OF APPLE, INC., CUPERTINO, CA  
RAM® BALL ADAPTER FOR APPLE MAGSAFE TO BE USED FOR LIGHT-DUTY,  
CLOSED COCKPIT APPLICATIONS ONLY

SEEN IN THIS PHOTO:

**RAM-B-166-UN10U**

RAM® X-Grip® Large Phone Mount with  
Twist-Lock™ Suction Cup

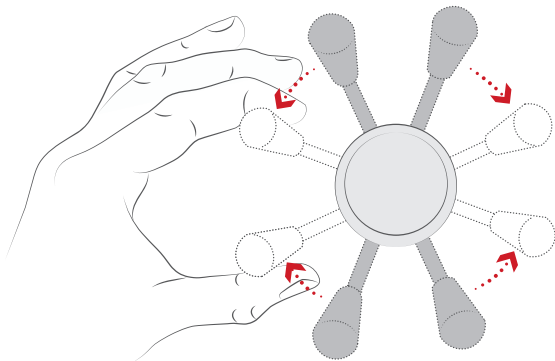


DEVICE HOLDERS CONTINUED

**PHONE  
RAM® X-GRIP®**

BUILD YOUR KIT WITH THE  
**RAM® MOUNT BUILDER**

The RAM® X-Grip® is the most durable universal phone holder on the market. The spring-loaded arms expand and contract to provide a perfect fit for your phone with or without a case. Available for phones of all sizes, the RAM® X-Grip® secures your device while keeping it completely functional and accessible. No matter what mounting base you pair the RAM® X-Grip® with, the RAM® ball and socket technology allows for near-infinite adjustability and extends the life of your phone with vibration damping capabilities.



Spring-loaded 'X' design with rubber caps provides a secure fit

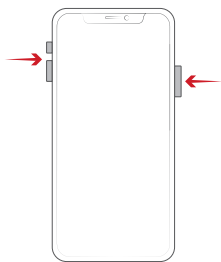


**RAM-HOL-UN7BU**  
RAM® X-Grip™ for Small Phones

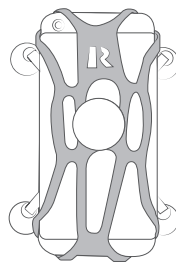


**RAM-HOL-UN10BU**  
RAM® X-Grip™ for Large Phones

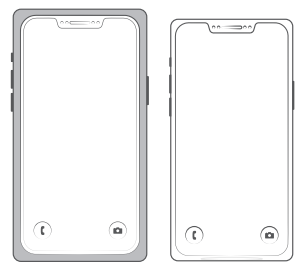
[EXPLORE RAM® X-GRIP® KITS](#)



Leaves buttons and ports exposed and accessible



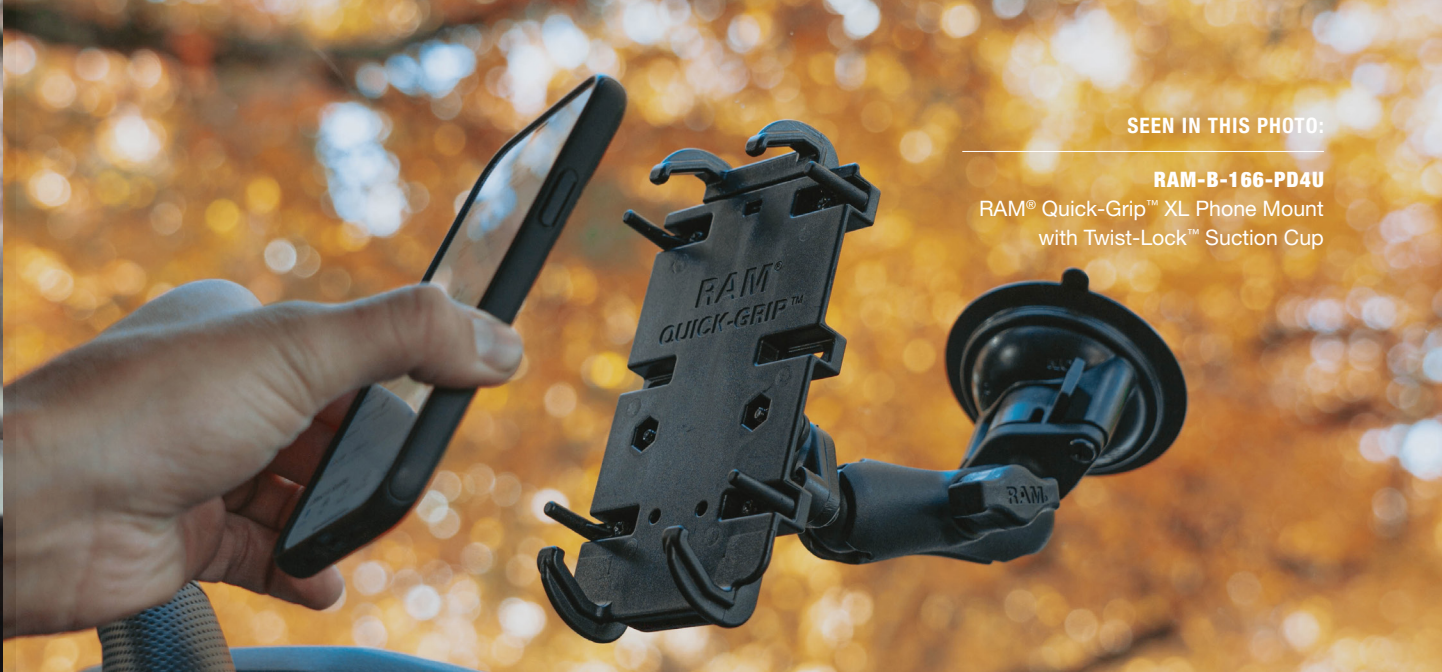
Includes safety tether for extra peace of mind



Supports phone with and without a case

SEEN IN THIS PHOTO:

**RAM-B-166-PD4U**  
 RAM® Quick-Grip™ XL Phone Mount  
 with Twist-Lock™ Suction Cup



DEVICE HOLDERS CONTINUED

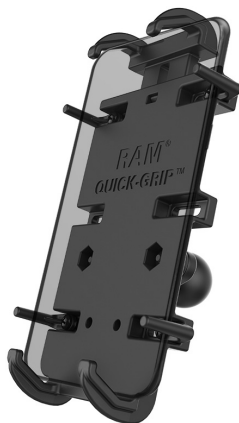
**PHONE**  
**RAM® QUICK-GRIP™**

Capable of holding a broad range of electronics, the spring-loaded grips provide a secure fit for your phone with or without a case. Take advantage of efficient one-handed insertion and removal of your device, no matter if the device is in portrait or landscape. The adjustable optional side support arms add extra security and can shift to fit the width of your device perfectly.



**RAM-HOL-PD3-238AU**

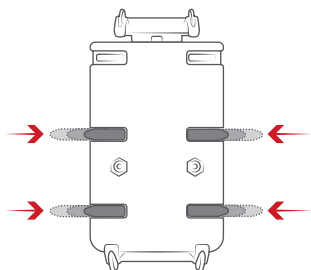
RAM® Quick-Grip™ for Small Phones



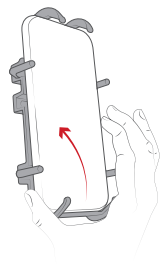
**RAM-HOL-PD4-238AU**

RAM® Quick-Grip™ for Large Phones

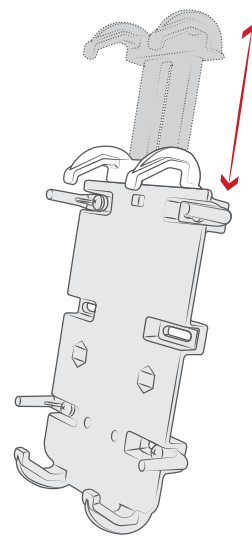
EXPLORE RAM® QUICK-GRIP™ KITS



Adjustable side supports  
 for wider devices



One-handed docking  
 and removal



Spring-loaded top grip keeps  
 device in place



**SEEN IN THIS PHOTO:**

**RAM-HOL-AP39BU**

RAM® Form-Fit Holder for iPhone 13 Pro Max + More

**RAM-B-201U-A**

RAM® B Size Short Double Socket Arm

**RAM-B-367B-M6U**

RAM® Ball Adapter Base for '22 Toyota Tundra Grab Handle



# PHONE

## FORM-FIT PHONE HOLDERS

These high-strength composite, form-fit cradles were designed specifically for Apple and Samsung devices. Allowing for one-handed insertion and removal, all buttons, cameras, ports, and speakers are left exposed. With the two-hole AMPS pattern on the back of each cradle, attach to a RAM® diamond ball base and additional RAM® components to complete your mounting solution.



**RAM-HOL-AP38U**  
For Apple iPhone 13, 13 Pro,  
14, and 14 Pro



**RAM-HOL-AP39U**  
For Apple iPhone 13 Pro Max,  
14 Plus, and 14 Pro Max



[EXPLORE IPHONE FORM-FIT HOLDERS](#)



**RAM-HOL-SAM84PU**  
Powered Dock for Samsung  
XCover6 Pro Without Case

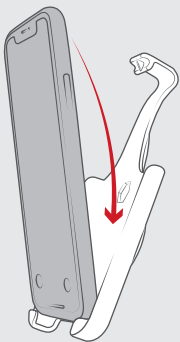


**RAM-HOL-SAM84CP-1U**  
Powered Dock for XCover6 Pro  
with OEM or RAM® Skin™

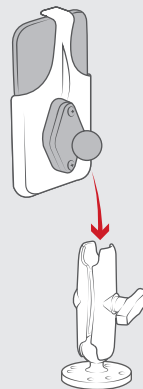


[EXPLORE SAMSUNG FORM-FIT HOLDERS](#)

### FEATURES



Designed for one-handed insertion and removal of device, providing a perfect fit for phones without a case



Compatible with B and C size RAM® diamond ball bases for attaching a double socket arm

SEEN IN THIS PHOTO:

**RAM-B-189-PIV1-UN11U**

RAM® X-Grip® with Twist-Lock™ Suction for 12" Tablets



SEEN IN THIS PHOTO:

**RAM-231ZU**

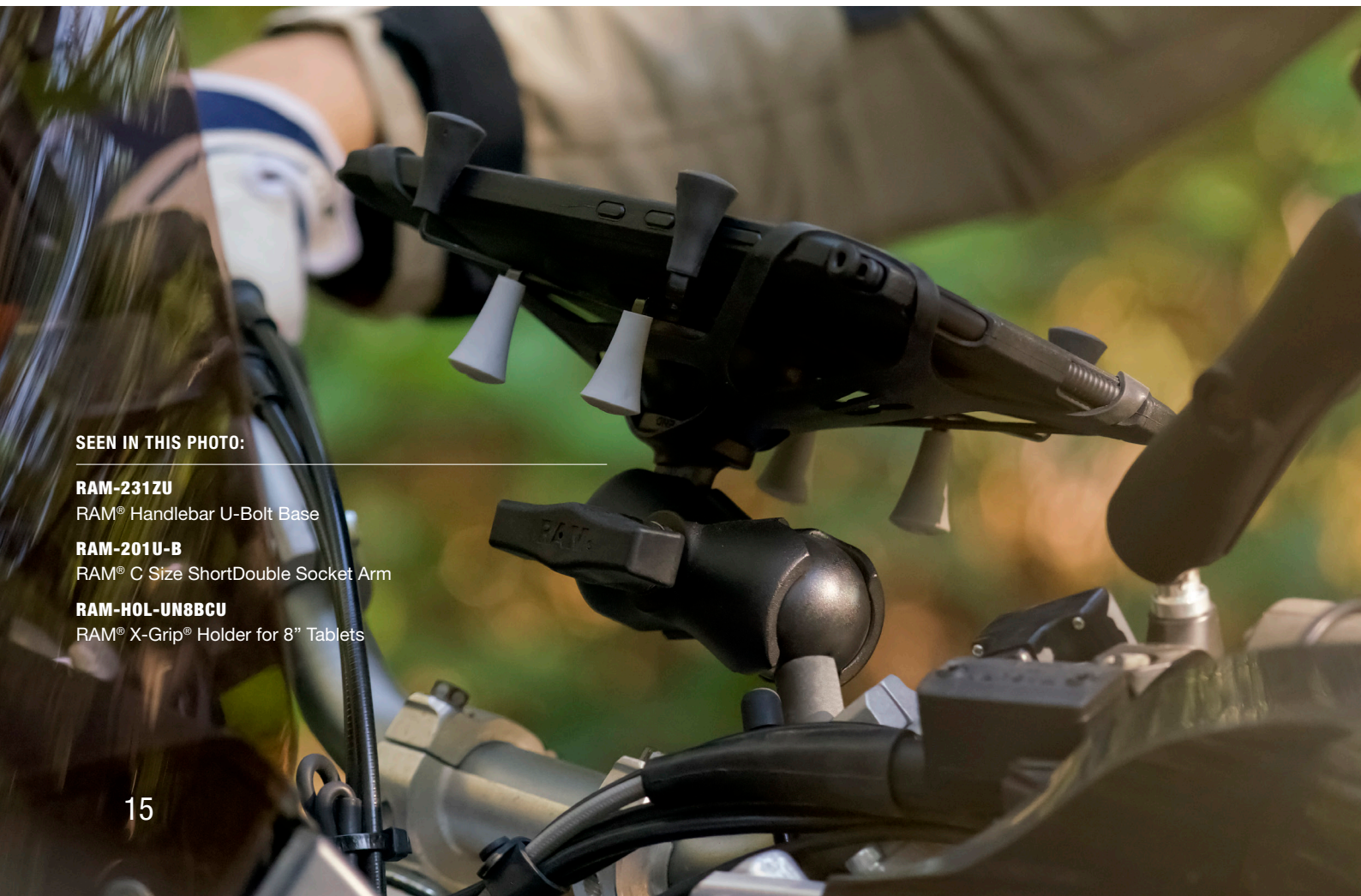
RAM® Handlebar U-Bolt Base

**RAM-201U-B**

RAM® C Size ShortDouble Socket Arm

**RAM-HOL-UN8BCU**

RAM® X-Grip® Holder for 8" Tablets





# TABLETS

## RAM® X-GRIP®

BUILD YOUR KIT WITH THE  
**RAM® MOUNT BUILDER**

Using a tablet for in-vehicle navigation and mobile work is on the rise. The RAM® X-Grip® for tablets holds all the benefits and design features of the standard X-Grip® with added arm support for a variety of different size tablets with or without a case. Additional grip handles provide side support for portrait or landscape orientation. Protect your investment with the highly rugged RAM® X-Grip® and be sure these holders stand the test of time in the harshest environments.



**RAM-HOL-UN8BU**  
RAM® X-Grip® for 7"-8" Tablets



**RAM-HOL-UN9U**  
RAM® X-Grip® for 9"-10" Tablets



**RAM-HOL-UN11U**  
RAM® X-Grip® for 12" Tablets

## Popular Kits

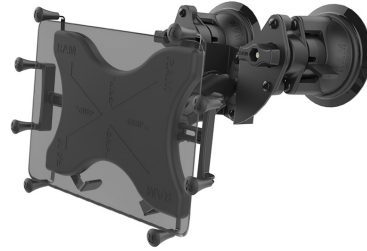
EXPLORE TABLET KITS



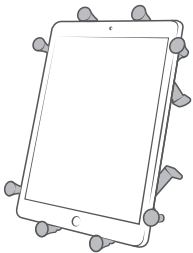
**RAM-B-407-UN8U**  
RAM® Tough-Wedge™ Kit for 8" Tablets



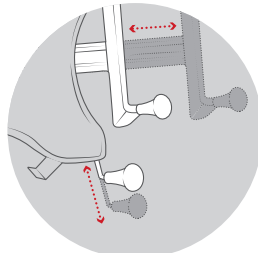
**RAM-VB-195-SW2 & RAM-HOL-UN9U**  
RAM® No-Drill™ Kit for 9"-10" Tablets



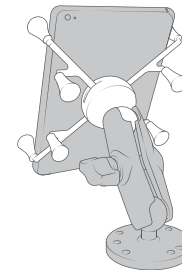
**RAM-B-189-PIV1-UN11U**  
RAM® Dual Suction Kit for 12" Tablets



Steel, spring-loaded arms keep tablets secure



Additional grip handles for convenient insertion and removal

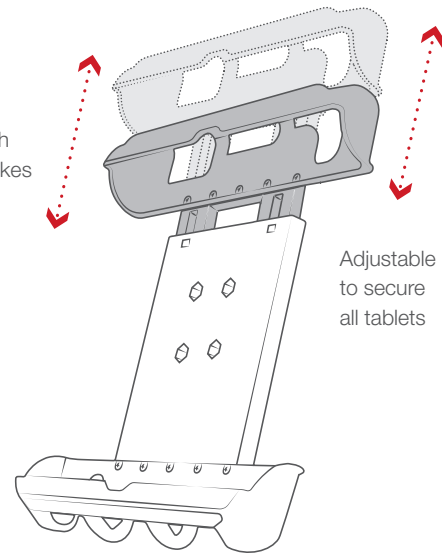


Compatible with any B or C size RAM® mounting components

# TABLETS

## RAM® TAB-TITE™ & RAM® TAB-LOCK™

Get the most out of your tablet with the RAM® Tab-Tite™ and Tab-Lock™ spring-loaded, quick release holders. With interchangeable end cups, you can fit the holder to your tablet for a near custom fit. The spring-loaded design makes it easy to insert and remove your tablet while keeping it secure.



**RAM-HOL-TAB20U**  
For 9"-10.5" Tablets  
with Heavy Duty Cases



**RAM-HOL-TABL20U**  
For 9"-10.5" Tablets with Heavy Duty Cases



**RAM-HOL-TAB12U**  
For 8" Tablets with Cases



**RAM-HOL-TABL12U**  
For 8" Tablets with Cases



SEEN IN THIS PHOTO:

**RAM-HOL-TABL20U**

RAM® Tab-Lock™ Holder for 9"-10.5" Tablets

**RAM-HOL-UN10B-C-354-TRA1U**

RAM® X-Grip® with Track Ball™ Base

**RAM-DT-204-TRACK-A12U**

RAM® Tough-Track™ for '18-23 Jeeps

# TABLETS

## RAM® TAB-TITE™ & RAM® TAB-LOCK™

BUILD YOUR KIT WITH THE  
**RAM® MOUNT BUILDER**

### Popular Kits

[EXPLORE TABLET KITS](#)



**RAM-138-TAB17U**

RAM® Tab-Tite™ for 10" Tablets Drill-Down Mount



**RAP-299-3-UN11U**

RAM® X-Grip® for 12" Tablets Cup Holder Mount



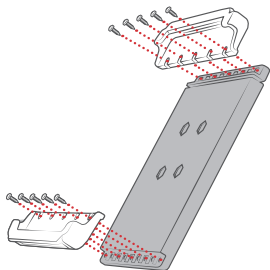
**RAM-B-407-201-C-TAB3U**

RAM® Tab-Tite™ for 10" Tablets with  
RAM® Tough-Wedge™ Mount

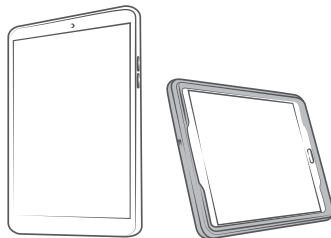


**RAM-231Z-2-TABL20U**

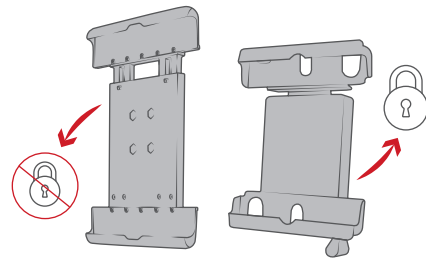
RAM® Tab-Lock™ for 9"-10.5" Tablets with  
ATV/UTV Rail Base



Interchangeable cups  
support any tablet



Supports tablets in portrait and  
landscape mode



Non-locking and locking  
options available

**SEEN IN THIS PHOTO:**

---

**RAM-HOL-AP24U**

RAM® EZ-Roll'r™ Cradle for the  
Apple iPad Pro 12.9" 3<sup>rd</sup> Gen

**RAM-VB-203-SW2**

RAM® No-Drill™ Mount for '19-21  
Chevy Silverado + More



**SEEN IN THIS PHOTO:**

---

**RAM-HOL-AP20U**

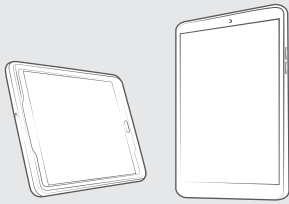
RAM® EZ-Roll'r™ Cradle for  
Apple iPad mini 4 & 5

**RAM-202-400**

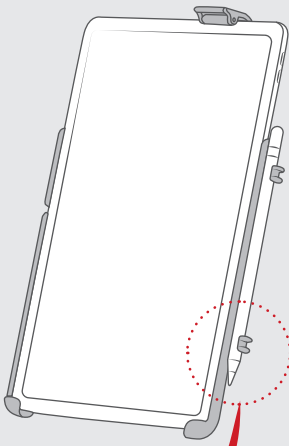
RAM® Tough-Claw™ Small  
Clamp Mount with Round  
Plate Adapter



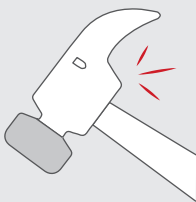
## FEATURES



Supports tablets in portrait and landscape mode



Integrated Apple Pencil holder for select models



Made of high-strength composites for durability and reliability in the most demanding environments

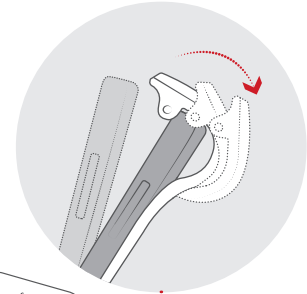
## DEVICE HOLDERS CONTINUED

# TABLETS

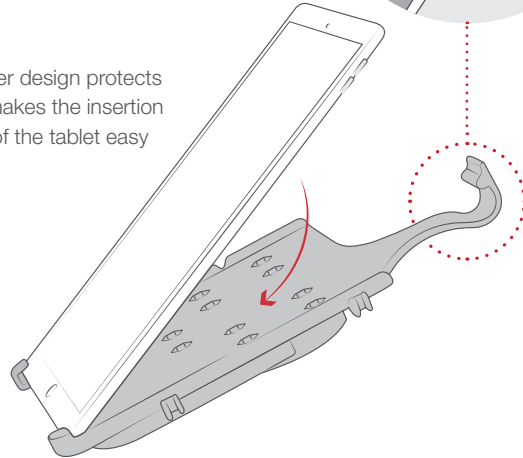
## RAM® EZ-ROLL'R™

EXPLORE EZ-ROLL'R™ KITS

These form-fit holders are designed to fit your caseless device perfectly for a low-profile and lightweight mounting solution. The patented EZ-Roll'r™ design allows for easy insertion and removal of the tablet without fumbling around. Multiple attachment points located on the back of the cradle for the RAM® ball adapter allow for additional adjustments to get your tablet in the best position.



Patented roller design protects device and makes the insertion & removal of the tablet easy



**RAM-HOL-AP23U**

For Apple iPad Pro 11" & Air 4



**RAM-HOL-AP24U**

For Apple iPad Pro 12.9" 3rd Gen



**RAM-HOL-AP36U**

For iPad mini 6



**RAM-HOL-AP31U**

For Apple iPad 7th & 8th Gen

# CAMERA ADAPTERS

BUILD YOUR KIT WITH THE  
**RAM® MOUNT BUILDER**

Capture the best photos and video possible with the help of RAM® Mounts camera ball adapters, allowing for the perfect angle and a secure hold. Constructed with the highest quality materials, the RAM® ball design dampens shock and vibration to help the camera's image stabilization for a smooth video. Discover the GoPro® base adapter, specifically designed for GoPro® action cameras and easily replaces the factory mount. The RAM® universal action camera adapter securely attaches to any compatible action camera, and the RAM® Tough-Ball™ with 1/4"-20 threaded stud is ideal for mounting any cameras including DSLR's and 360 cameras.



**RAP-B-202U-GOP1**

RAM® Action Camera Universal Ball Adapter

EXPLORE ACTION CAMERA KITS



**RAP-B-202U-GOP2**

RAM® Ball Adapter for GoPro® Bases

EXPLORE GOPRO® KITS



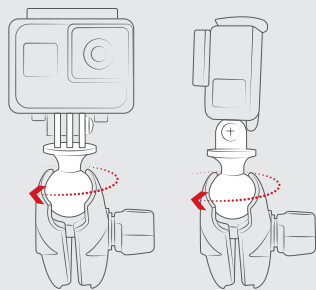
**RAP-B-379U-252025**

RAM® Tough-Ball™ with 1/4"-20 x .25" Threaded Stud

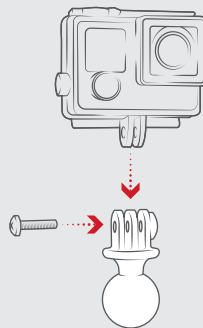
EXPLORE TOUGH-BALL™ KITS



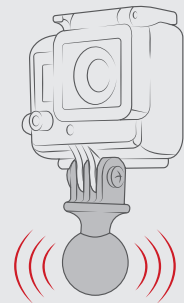
## FEATURES



Adjustable position of camera with the turn of a single knob



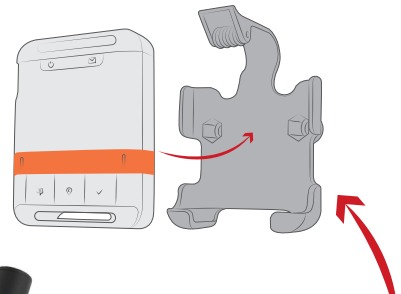
Supports all cameras with 1/4"-20 adapter and action camera hinge adapter



Rubber ball dampens shock and vibration

# GPS & SOS

The form-fit and EZ-Roll'r™ designs carry over to GPS devices, each one capable of transferring between your vehicles, clip on to your backpack, or belt—allowing you to navigate safely and hands-free. Widescreen GPS devices can also take advantage of the locking holders that provide extra protection and have extra space in the back for the Garmin power accessory.



**RAM-HOL-B-238-SW1U**  
Holder for Somewear Global Hotspot



**RAM-B-202-GA76U**  
RAM® Spine Clip for Garmin Devices



**RAM-HOL-SP05U**  
Cradle for SPOT X™



**RAM-HOL-SP06U**  
Cradle for SPOT Gen4

## Popular Kits

EXPLORE GPS & SOS KITS



**RAM-B-166-GA76U**  
Garmin Spine Clip Holder  
with RAM® Suction Cup



**RAP-170-GA76U**  
Garmin Spine Clip Holder  
with Belt/Backpack Clip



**RAM-B-400-SP06U**  
SPOT Gen4 Cradle  
with RAM® Tough-Claw™



**RAM-B-138-SP05U**  
SPOT X™ Cradle  
with Drill-Down Mount

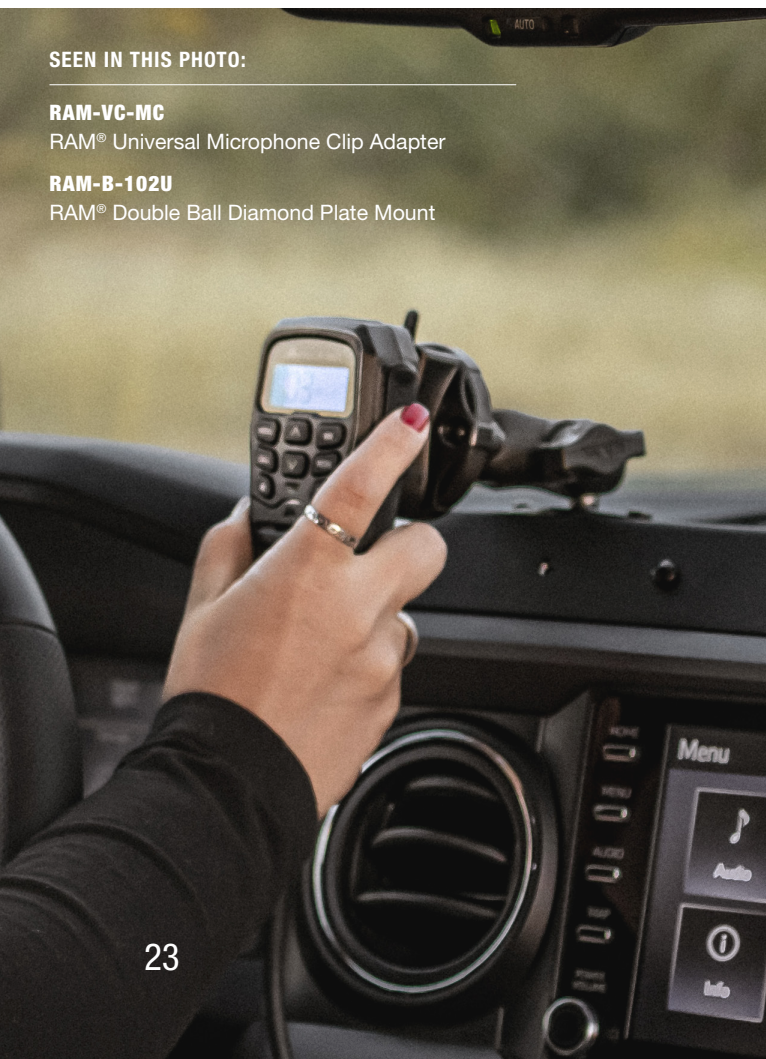




SEEN IN THIS PHOTO:

**RAM-B-149Z-UN4U**

RAM® Finger-Grip™ with U-Bolt Base



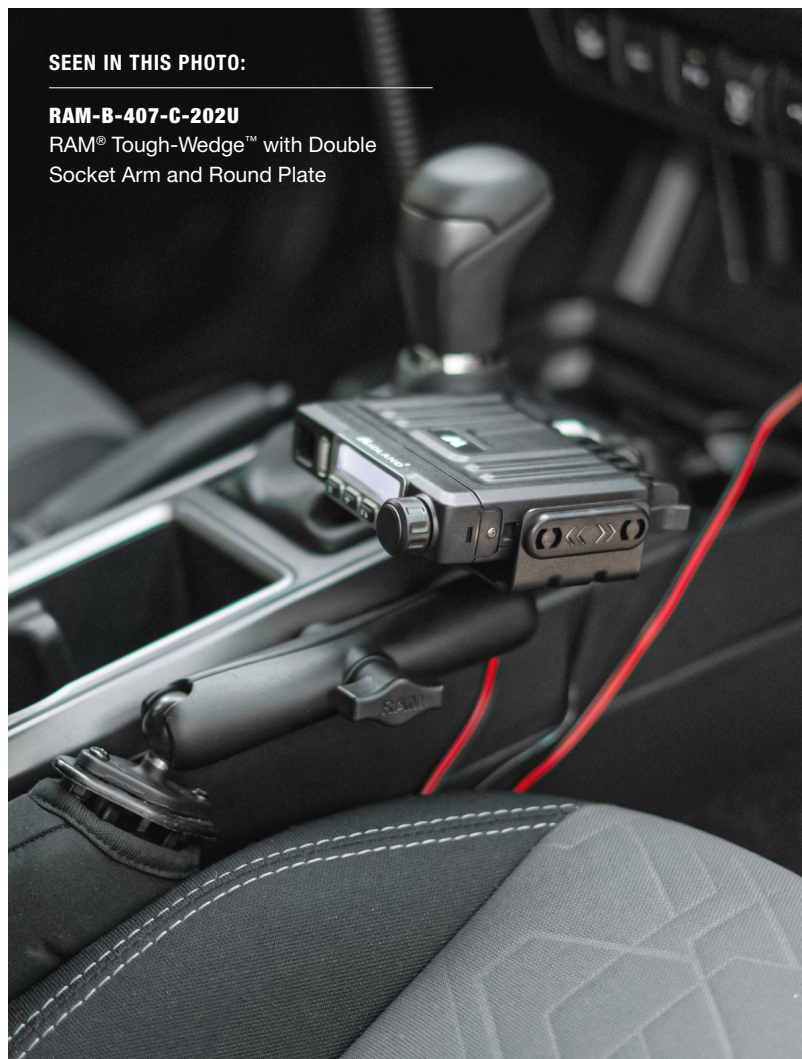
SEEN IN THIS PHOTO:

**RAM-VC-MC**

RAM® Universal Microphone Clip Adapter

**RAM-B-102U**

RAM® Double Ball Diamond Plate Mount



SEEN IN THIS PHOTO:

**RAM-B-407-C-202U**

RAM® Tough-Wedge™ with Double  
Socket Arm and Round Plate



# RADIOS & MICROPHONES

BUILD YOUR KIT WITH THE  
**RAM® MOUNT BUILDER**

Doubling down on our “universal first” approach, radio communication devices of all kind benefit from the patented RAM® Finger-Grip™ equipped with adjustable and movable “fingers” to modify the grip of the holder to accommodate various sizes of handheld radios. All of our microphone accessories have been designed to complement our modular product by containing matching hole patterns, different sizes and lengths and bracket configurations for a truly custom mounting solution with peripheral add-on potential.



**RAM-MIC-A01**  
RAM® Microphone



**RAM-VC-MC**  
RAM® Microphone Clip



**RAM-VC-MC1M**  
RAM® Magnetic Microphone Clip



**RAM-HOL-UN4U**  
RAM® Finger-Grip™ Universal Radio Holder

## Popular Kits

EXPLORE RADIO KITS

Utilizing your radio's included gimbal bracket or pre-drilled mounting holes on the bottom, simply install various RAM® ball adapters to pair with a mounting base that suits your mounting location.



**RAM-B-101U**  
RAM® Double Ball Mount  
with Round Ball Base



**RAM-B-111U**  
RAM® Double Ball Mount  
with Electronic Mount Base



**RAM-B-407-C-202U**  
RAM® Tough-Wedge™ Mount with  
AMPs Patterns



**RAM-101-MIC1U**  
RAM® Short Bracket Adapter for  
Speakers & Microphones



**RAM-101-MIC2U**  
RAM® Standard Bracket Adapter for  
Speakers & Microphones

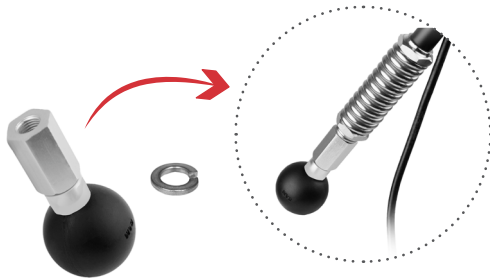


**RAM-B-407-UN4U**  
RAM® Finger-Grip™ with  
Tough-Wedge™ Base

# ANTENNA MOUNTS

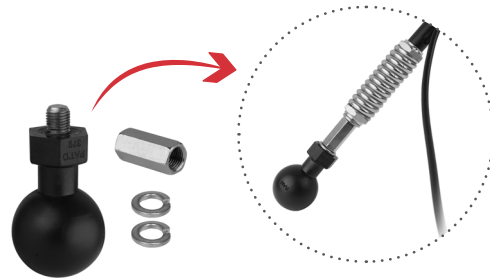
## WEBOOST

weBoost has become an off-roading essential, boosting cell service anywhere on the road. RAM® Mounts provides a versatile way of mounting the antenna to multiple locations on the exterior of the vehicle with the added benefit of collapsing when not in-use. Simply screw the 3/8"-24 x .375" RAM® Tough-Ball™ directly into any CB antenna spring with removable threads or into the weBoost included thread adapter.



**RAM-451U**

Ball Adapter with 3/8"-24 Threaded Hole



**RAP-379U-372437-CN**

RAM® Tough-Ball™ with Coupling Nut

### Popular Kits

[EXPLORE WEBOOST KITS](#)

weBoost kits incorporate RAM® C size mounting components—including the weBoost ball adapter, short arm, and ball base to mount your booster wherever you need it.

### Ball Adapter Kits



**RAM-451-B-354-TRA1U**

RAM® Track Ball™ weBoost kit



**RAM-451-B-238U**

RAM® Drill-Down weBoost kit



**RAM-451-B-404U**

RAM® Tough-Claw™ weBoost kit

### Tough-Ball™ Kits



**RAM-379-372437-354-TRA1U**

RAM® Track Ball™ weBoost kit



**RAM-238-379-372437U**

RAM® Drill-Down weBoost kit



**RAM-404-379-372437U**

RAM® Tough-Claw™ weBoost kit

SEEN IN THIS PHOTO:

**RAM-451-B-404U**

RAM® Tough-Claw™ Heavy Duty Mount for weBoost



INTRO

DEVICE HOLDERS

IN-VEHICLE MOUNTING

ATV/UTV

DIRT BIKE/DUAL SPORT

SNOWMOBILE

MOUNTAIN BIKE/E-BIKE

ACCESSORIES & MORE

# IN-VEHICLE WINDSHIELD MOUNTING

The RAM® Twist-Lock™ suction cup has a strong hold on glass and non-porous surfaces and pairs with your favorite devices. Upgrade to a double or triple suction cup for a stronger hold for heavier devices, like a DSLR camera, or tablet or mount a combination of your go-to devices for adventures.



**RAM-B-224-1U**  
Twist-Lock™ Suction Cup



**RAM-B-189B-202U**  
Dual Suction Cup



**RAP-365-224-1U**  
Triple Suction Cup



**RAP-B-217-365-224-1U**  
Triple Suction Cup with Double Ball Base

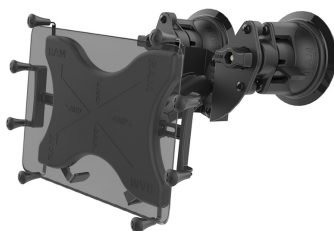


## Popular Kits

[EXPLORE WINDSHIELD KITS](#)



**RAM-B-166-UN7U**  
RAM® X-Grip® Phone Kit



**RAM-B-189-PIV1-UN11U**  
RAM® X-Grip® Kit for 12" Tablets



**RAM-B-166-UN4U**  
RAM® Finger-Grip™ Kit

# DASHBOARD MOUNTING

## RAM® DRILL-DOWN & FLEX ADHESIVE MOUNTS

BUILD YOUR KIT WITH THE  
**RAM® MOUNT BUILDER**

RAM® drill-down bases double as ball adapters for the back of most of our holders and for a sturdy mounting base utilizing the universal 2-hole diamond and 4-hole AMPS patterns. Pair these mounts with solutions from some of our trusted partners: Expedition Essentials and BuiltRight Industries. Both partners make stellar dashboard modifications built for RAM® drill-down mounting components.



**RAM-B-202U**  
Drill-Down Base with 4-Hole AMPS



**RAM-B-238U**  
Diamond Drill-Down Base 2-Hole AMPS



**RAP-B-378U**  
Flex Adhesive Base



### Popular Kits

[EXPLORE DASHBOARD KITS](#)



**RAM-B-138-PD4U**  
RAM® Quick-Grip™ Drill-Down Kit



**RAM-B-378-UN8U**  
RAM® X-Grip® for 8" Tablets Adhesive Kit



**RAM-B-378-202U-GOP1**  
Action Camera Adhesive Kit

IN-VEHICLE MOUNTING CONTINUED

# DASHBOARD MOUNTING EXPEDITION ESSENTIALS

BUILD YOUR KIT WITH THE  
**RAM® MOUNT BUILDER**

RAM® Mounts is proud to partner with veteran owned Expedition Essentials. All products from Expedition Essentials are “Built from Adventure” and are created from necessity, exploring on the trail and in the back-country. Perfect for overland vehicles, Expedition Essentials makes heavy-duty powered and non-powered dashboard accessory mounts that are designed for RAM® drill-down mounts. Find your specific vehicle and match a custom made dashboard accessory mount for a clean, turnkey solution for all your essential devices while out on the trail.



**RAM-B-202U**  
Drill-Down Base with 4-Hole AMPS



**RAM-B-238U**  
Diamond Drill-Down Base with 2-Hole AMPS



**RAP-B-354U-TRA1**  
RAM® Track Ball™

## Popular Kits

[EXPLORE DASHBOARD KITS](#)



**RAM-B-102-UN10U**  
RAM® X-Grip® Kit  
with Diamond Base



**RAM-B-102-PD3U**  
RAM® Quick-Grip™ Kit  
with Diamond Base



**RAP-B-202-GOP1-354-TRA1U**  
Action Camera Kit  
with RAM® Track Ball™



**RAP-B-202-GA76-TRA1U**  
Garmin Spine Clip Kit  
with RAM® Track Ball™



SEEN IN THIS PHOTO:

**RAM-VC-MC**  
RAM® Universal Microphone Clip Adapter

**RAM-B-102U**  
RAM® Double Ball Diamond Plate Mount

**RAM-HOL-UN12WB-1**  
RAM® Tough-Charge™ Wireless Charger

**IN-VEHICLE MOUNTING CONTINUED**

# DASHBOARD MOUNTING

## RAM® TOUGH-TRACK™ & HAND-TRACK™

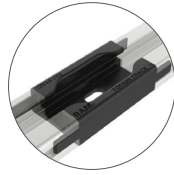
Using a track mounting system is a clean, clever, and innovative way to mount devices in your vehicle. With the Tough-Track™ and Hand-Track™, customize your system with a variety of track lengths and components for top-loading and end-loading functionality.

### RAM® Tough-Track™

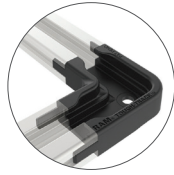
[EXPLORE TOUGH-TRACK™](#)



- **RAM-TRACK-EXA-9U**  
9" RAM® Tough-Track™
- **RAM-TRACK-EXA-9BU**  
9" Black RAM® Tough-Track™



**RAP-TRACK-EXA-CCU**  
Center Connector for RAM® Tough-Track™



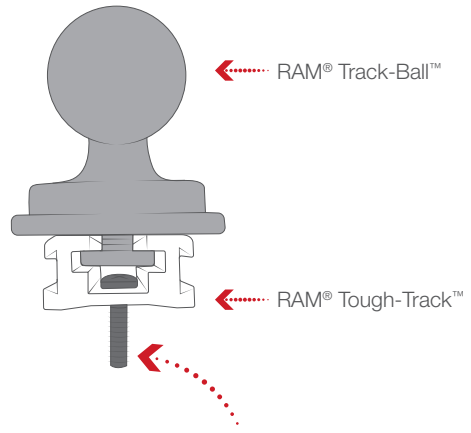
**RAP-TRACK-EXA-CC90U**  
90-Degree Connector for RAM® Tough-Track™

### RAM® Hand-Track™

[EXPLORE HAND-TRACK™](#)



**RAM-TRACK-H8U**  
8" RAM® Hand-Track™ (Overall Length: 14")



RAM® Tough-Track™ can be drilled to any flat surface and is designed for use with #8 screws for easy installation—hardware not included



**SEEN IN THIS PHOTO:**

- RAM-HOL-UN11U**  
RAM® X-Grip® Holder for 12" Tablets
- RAM-201U-D**  
RAM® C Size Double Socket Arm
- RAP-354U-TRA1**  
RAM® Track-Ball™ C Size

**SEEN IN THIS PHOTO:**

- RAM-HOL-B-238-SW1U**  
RAM® Form-Fit Holder for Somewear Global Hotspot
- RAM-B-201U**  
RAM® B Size Double Socket Arm
- RAP-B-354U-TRA1**  
RAM® Track-Ball™ B Size



SEEN IN THIS PHOTO:

**RAP-HOL-UN10B-201U**

RAM® X-Grip® Phone Mount with Arm

**RAP-B-354U-TRA1**

RAM® Track Ball™ - B size

**RAP-B-202-GOP1-354-TRA1U**

RAM® Track Ball™ Action Camera Mount

**RAM-DT-204-TRACK-A12U**

RAM® Tough-Track™ for '18-23 Jeeps



**IN-VEHICLE MOUNTING CONTINUED**

# DASHBOARD MOUNTING RAM® TOUGH-TRACK™ FOR JEEPS

Compatible with '18-23 Jeep JL, JLU, and Gladiators, mounting RAM®'s first vehicle-specific Tough-Track™ creates an ideal device setup for overland and off-road enthusiasts. Consisting of a dash mounting plate and a top-loading 12" Tough-Track™, this no-drill dash track couldn't be easier to install, seamlessly fitting into the dashboard's cubby space. Easily attach RAM® Track Ball™ components along with double socket arms and device holders for phones, small tablets, GPS units, radios, cameras, and more.



**RAM-DT-204-TRACK-A12U**  
RAM® Tough-Track™ for '18-23 Jeeps

## Popular Components & Kits

[EXPLORE TRACK KITS](#)



**RAP-B-354U-TRA1**  
RAM® Track Ball™ - B Size



**RAP-354U-TRA1**  
RAM® Track Ball™ - C Size



**RAP-HOL-UN7B-354-TRA1U**  
RAM® X-Grip® Track Kit



**RAP-B-202-GOP1-354-TRA1U**  
Action Camera Track Kit



SEEN IN THIS PHOTO:

**RAM-HOL-B-238-SW1U**

RAM® Form-Fit Holder for Somewear Global Hotspot

**RAM-HOL-UN4-C-354-TRA1U**

RAM® Finger-Grip™ with Track Ball™

**RAM-B-202-AP36U**

RAM® EZ-Roll'r™ for Apple iPad mini 6



INTRO

DEVICE HOLDERS

IN-VEHICLE MOUNTING

ATV/UTV

DIRT BIKE/DUAL SPORT

SNOWMOBILE

MOUNTAIN BIKE/E-BIKE

ACCESSORIES & MORE

IN-VEHICLE MOUNTING CONTINUED

# DASHBOARD MOUNTING RAM® TOUGH-TRACK™ FOR BRONCOS

Designed for '21-23 Ford Broncos, this track converts your dashboard into a full-length track mounting area. Consisting of two top-loading black aluminum 13" RAM® Tough-Track™'s attached to three grips, installation is easy with no drilling required. Simply remove the center hex bolt, align the grips to the defrosted ducts, and reinstall the hex bolt through the center grip. This track features rounded edges to ensure dashboards stay pristine and is compatible with all Bronco trim levels.



**RAM-DT-207-TRACK-EXA-29BU**

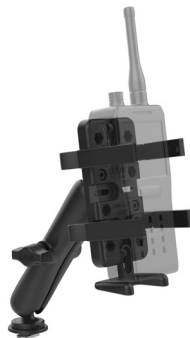
RAM® Tough-Track™ for '21-23 Ford Bronco



**RAP-B-366-153-354-TRA1U**  
1/4"-20 Adapter Track Kit



**RAP-B-202-GA76-TRA1U**  
Garmin Spine Clip Track Kit



**RAM-HOL-UN4-C-354-TRA1U**  
Finger-Grip™ Track Kit



**RAM-HOL-PD4-C-354-TRA1U**  
Quick-Grip™ Track Kit

IN-VEHICLE MOUNTING CONTINUED

## CUP HOLDER MOUNTING RAM® STUBBY™

EXPLORE STUBBY™ KITS

With a durable base and flexible support fins, the RAM® Stubby™ base is portable and versatile mounting solutions for your vehicle's cup holders. Fits any cup holder from 2.57" - 3.5" in diameter.



**RAP-B-299-4U**  
RAM® Stubby™

## SEAT MOUNTING RAM® TOUGH-WEDGE™

EXPLORE TOUGH-WEDGE™ KITS

Drop in the RAM® Tough-Wedge™ for a quick and easy device mount that doubles as a barrier for dropping items in between the seats. This easily removable solution is perfect for long drives with the kids by simply swapping the Tough-Wedge™ around to face the back seat — add a tablet holder and you've successfully converted the back seat into a movie theater.

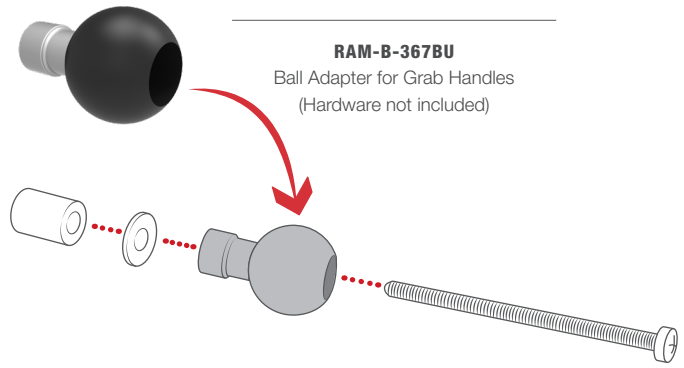


**RAM-B-407U**  
RAM® Tough-Wedge™

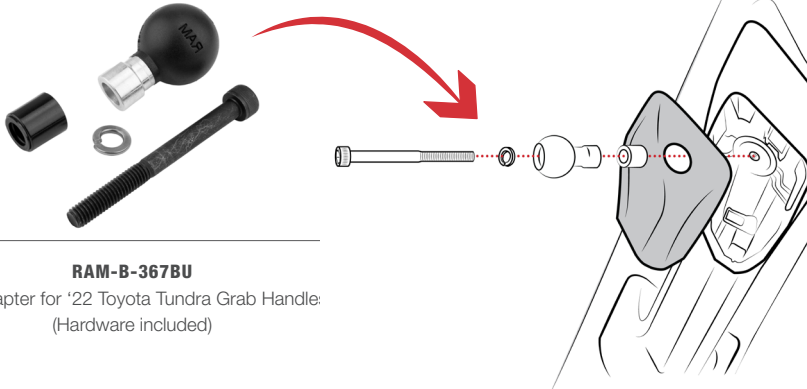


# GRAB HANDLE MOUNTING

Keep your devices out of your field of view and off the windshield by mounting to your vehicle's grab handle. With the right hardware and the RAM® ball adapter base, you can use RAM® components to create a clean mounting solution.



## Grab Handle Kit for '22 Toyota Tundra



**FEATURES**

Handlebar

Compatible with any vehicle grab handle with removable hardware or motorcycles with a M8 threaded bolt; hardware not included





SEEN IN THIS PHOTO:

**RAM-VP-SW2F-89**

RAM® Tele-Pole™ with 8" & 9" Poles  
and Double Ball Mount



SEEN IN THIS PHOTO:

**RAM-VB-138-SW2**

RAM® No-Drill™ Mount for '05-23  
Toyota 4Runner & Tacoma

**RAM-HOL-UN11U**

RAM® X-Grip® Holder for 12" Tablets

**RAM-B-400-HOL-UN7BU**

RAM® X-Grip® with Tough-Claw™ Base



SEEN IN THIS PHOTO:

**RAM-VB-138-SW2**

RAM® No-Drill™ Mount for '05-23 Toyota 4Runner & Tacoma

**RAM-234-6**

RAM® Tough-Tray™ II Tablet Holder

**RAM-B-102-UN10U**

RAM® X-Grip® Phone Mount with Diamond Base

# RAM® NO-DRILL™ VEHICLE MOUNTS

BUILD YOUR KIT WITH THE  
**RAM® MOUNT BUILDER**

Vehicle mounting solutions from RAM® Mounts are the top choice for securing laptops, tablets, add-ons, and more. Our No-Drill™ vehicle bases are easy to install using only the existing seat bolts to your specific vehicle. We have many vehicle bases to choose from that fit seamlessly in your specific car, truck, or van – and universal options for all other vehicles. These mounting solutions have become a popular choice for tablet mounting using the large tablet screens for navigation and in-vehicle entertainment.

1

### CHOOSE A HOLDER

Select a holder based on your device

2

### CHOOSE A TELE-POLE™ & SWING ARM

Select a Tele-Pole™ and swing arm that provides the correct amount of height and adjustability.

3

### CHOOSE A BASE

Select a base that's specific to your vehicle make & model.



## Popular Kits

EXPLORE NO-DRILL™ KITS



**RAM-VB-195-SW2**

For '15-23 Ford F-150, '17-23 F-250 + More



**RAM-VB-138-SW2**

For '05-23 Toyota 4Runner & Tacoma



**RAM-VB-186ST1-SW2**

For '19-23 Ram 1500 Pickup Trucks (5th Gen)



**SEEN IN THIS PHOTO:**

**RAM-101U**

RAM® Double Ball Mount with Two Round Plates - C Size

**RAM-HOL-UN11U**

RAM® X-Grip® Universal Holder for 12" Tablets



**SEEN IN THIS PHOTO:**

**RAP-400U**

RAM® Tough-Claw™ Small Clamp Ball Base

**RAM-230U**

RAM® Double Ball Adapter

**RAM-201U**

RAM® Double Socket Arm

**RAP-200-2U**

RAM® Double Socket Swivel Arm

**RAM-243U**

RAM® 50x100mm Half VESA Plate with Ball

# VAN LIFE & ENTERTAINMENT

BUILD YOUR KIT WITH THE  
**RAM® MOUNT BUILDER**

Van life is growing in popularity for those who want to work from anywhere their vehicle can take them. RAM® has solutions to securely mount computer monitors and tablets for a streamlined mobile office. For backseat entertainment, discover the small RAM® Torque™ base to mount a device to headrest posts—perfect for trips of any length.

## Popular Components

[EXPLORE VAN LIFE](#)



**RAP-200-2U**  
Double Socket Swivel Arm



**RAM-347U**  
Ball Adapter with AMPS Plate



**RAM-B-230U**  
Double Ball Adapter



**RAM-B-408-37-62U**  
Torque™ Base for Headrests



SEEN IN THIS PHOTO:

- RAM-HOL-TAB8U**  
RAM® Tab-Tite™ Tablet Holder
- RAM-B-201U-A**  
RAM® Double Socket Arm - B Size Short
- RAM-B-408-37-62U**  
RAM® Torque™ Base for Headrests



SEEN IN THIS PHOTO:

- RAM-B-408-37-62U**  
RAM® Torque™ Base for Headrests

# ATV/UTV

## ROLL BAR & RAIL MOUNTING

### ATV/UTV STRAP HOSE CLAMP

Available in B or C size ball base for rails from 1.5" up to 2" in diameter.

#### Popular Components & Kits

[EXPLORE STRAP HOSE KITS](#)



**RAM-B-108BU**

For rails 1" to 2.1" in diameter



**RAM-231Z-2U**

For rails 1.57" to 3.15" in diameter



**RAM-B-108-GOP1U**

Action Camera Strap Clamp Kit



**RAM-B-108-UN4**

RAM® Finger-Grip™ Strap Clamp Kit

SEEN IN THIS PHOTO:

**RAM-B-108-UN4**

RAM® Finger-Grip™ with Strap Hose Clamp Base



SEEN IN THIS PHOTO:

**RAM-B-231-2-UN7U**

RAM® X-Grip® Phone Mount with ATV/UTV Rail Base





ATV/UTV CONTINUED

# ROLL BAR & RAIL MOUNTING RAM® TORQUE™

Available in B or C size ball base for rails from 1.5" up to 2" in diameter.

BUILD YOUR KIT WITH THE  
**RAM® MOUNT BUILDER**

## Popular Components

EXPLORE TORQUE™ KITS



**RAM-B-351-415-15-2U**  
B Size Torque™ Base



**RAM-351-415-15-2U**  
C Size Torque™ Base



**RAM-B-337-1U**  
Add-A-Ball™ for Large Torque™ Bases



**RAP-B-351-1U**  
Add-A-Ball™ for Large Torque™ Bases



### SEEN IN THIS PHOTO:

**RAM-351-415-15-2U**  
RAM® Torque™ Base - C Size

**RAM-HOL-TAB20U**  
RAM® Tab-Tite™ Holder for 9"-10.5" Tablets

**RAM-201U**  
RAM® Double Socket Arm - C Size Medium

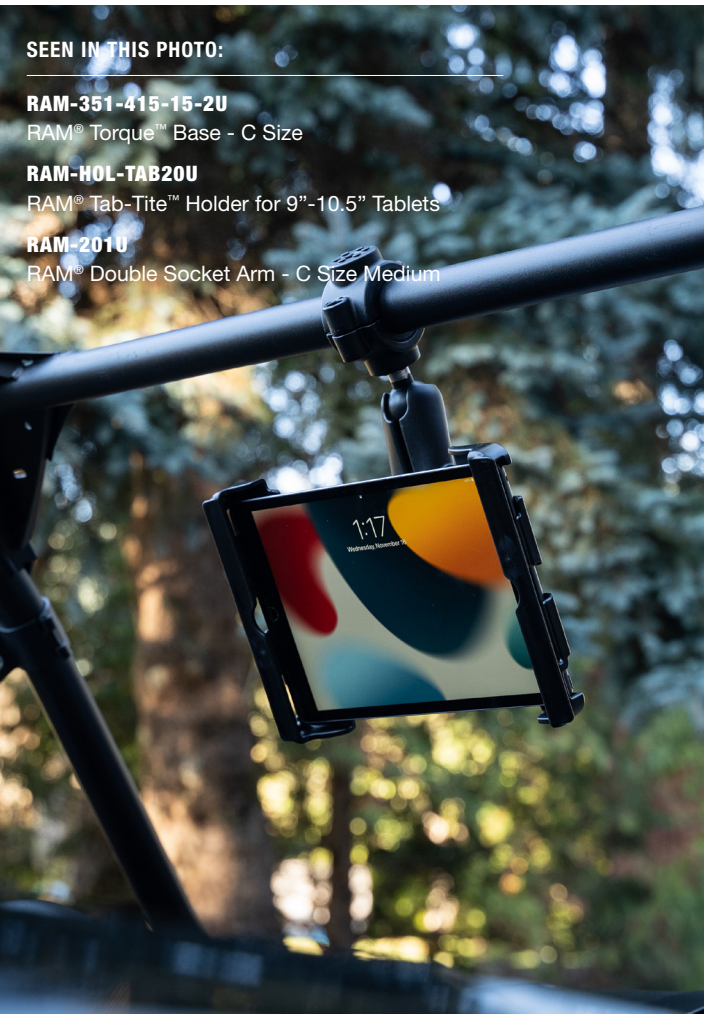
### SEEN IN THIS PHOTO:

**RAM-B-351-415-15-2U**  
RAM® Torque™ Base - B Size

**RAP-B-351-1U**  
RAM® Add-A-Ball™ for Large Torque™ Base

**RAM-HOL-PD4U**  
RAM® Quick-Grip™

**RAP-B-202U-GOP1**  
RAM® Action Camera Adapter



SEEN IN THIS PHOTO:

---

**RAP-401-TRACKU**

RAM® Tough-Track™ with Large Tough-Claw™

**RAP-HOL-UN7B-354-TRA1U**

RAM® X-Grip® with Track Ball™ Base

**RAP-B-202-GOP1-354-TRA1U**

RAM® Track Ball™ Action Camera Mount



ATV/UTV CONTINUED

# ROLL BAR & RAIL MOUNTING RAM® TOUGH-CLAW™

BUILD YOUR KIT WITH THE  
**RAM® MOUNT BUILDER**

Available in locking, non-locking, and low-profile options, B or C size ball base for rails from 3/8" up to 2" in diameter.

## Popular Components & Kits

[EXPLORE TOUGH-CLAW™ KITS](#)



**RAP-B-400U**

For rails .625" to 1.14" in diameter



**RAP-401U**

For rails 1" to 2.2" in diameter



**RAP-401-TRACKU**

Tough-Track™ with Tough-Claw™



**RAM-B-404-366U**

1/4"-20 Adapter Tough-Claw™ Kit



**RAM-B-152-404**

LED Spotlight Tough-Claw™ Kit



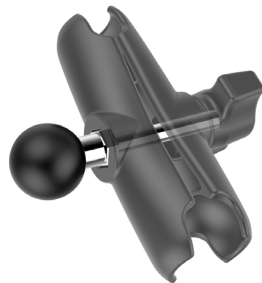
**RAP-404-TAB17U**

Tab-Tite™ Tough-Claw™ Kit



**RAP-B-404-GOP1U**

Action Camera Tough-Claw™ Kit



**RAM-B-273U**

Add-A-Ball™ for B Size Arms



INTRO  
DEVICE HOLDERS  
IN-VEHICLE MOUNTING  
ATV/UTV  
DIRT BIKE/DUAL SPORT  
SNOWMOBILE  
MOUNTAIN BIKE/E-BIKE  
ACCESSORIES & MORE

SEEN IN THIS PHOTO:

RAM-B-149Z-A-PD4U

RAM® Quick-Grip™ XL with U-Bolt Base



# DIRT BIKE/DUAL SPORT TOP SOLUTIONS

BUILD YOUR KIT WITH THE  
**RAM® MOUNT BUILDER**

RAM® Mounts make the most rugged and trusted motorcycle mounts on the planet. Bought and sold on 6 continents, riders from all over use the RAM® X-Grip® and RAM® Quick-Grip™ holders to keep their phones at optimal viewing distance without interfering with the handlebar controls or the rider's ability to turn the motorcycle. Nearly every location on the handlebars have a corresponding RAM® mounting base—from brake/clutch reservoir bases to mirror bases. Discover the many different motorcycle mounts RAM® carries for a wide variety of devices.

## Popular Bases

[EXPLORE MOTORCYCLE BASES](#)

### Ball Adapters



**RAM-B-236U**

Ball Adapter with  
3/8"-16 Threaded Post



**RAM-B-349-1U**

Ball Adapter with M10 X 1.5  
Threaded Post



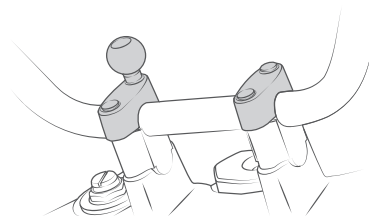
**RAM-B-367U**

Handlebar Clamp Base  
with M8 Bolts



**RAM-B-349U**

Ball Adapter with M10 X 1.25 Threaded Post



### Handlebar, Gas Tank, & Brake/Clutch Bases



**RAM-B-400U**

RAM® Tough-Claw™



**RAM-B-231ZU**

U-Bolt Base



**RAM-B-309-7U**

Brake/Clutch Reservoir & Handlebar Base



**RAM-B-410U**

Small Gas Tank Base

# TOP SOLUTIONS

EXPLORE MOTORCYCLE KITS

INTRO

DEVICE HOLDERS

IN-VEHICLE MOUNTING

ATV/UTV

DIRT BIKE/DUAL SPORT

SNOWMOBILE

MOUNTAIN BIKE/E-BIKE

ACCESSORIES & MORE



**RAM-B-174-A-UN10U**  
RAM® X-Grip® Brake/Clutch Reservoir Kit



**RAM-B-400-A-UN12W-V7M**  
RAM® Tough-Charge™ Wireless with Tough-Claw™



**RAM-B-400-A-UN14W-V7M-1**  
RAM® Quick-Grip™ Wireless with Tough-Claw™



**RAM-B-149Z-A-GOP1U**  
Action Camera U-Bolt Kit



**RAM-B-149Z-A-GA76U**  
Garmin Spine Clip U-Bolt Kit



**RAM-B-400-SPO6U**  
SPOT Gen4 Tough-Claw™ Kit



**RAM-B-417-400U**  
Level-Cup™ Tough-Claw™ Kit



SEEN IN THIS PHOTO:

**RAM-B-202-GA76U**  
RAM® Spine Clip Holder for Garmin Devices

**RAM-B-201U-A**  
RAM® Double Socket Arm - B Size Short

**RAM-B-236U**  
RAM® Ball Adapter with 3/8"-16 Threaded Post & Lock Washer



SEEN IN THIS PHOTO:

**RAM-B-149Z-A-UN14W-V7M-1**  
RAM® Quick-Grip™ 15W Waterproof Wireless Charging Handlebar Mount

# RAM® TOUGH-MIRROR™

**NEW**

Discover the new rugged mirrors for motorcycles, ATVs, UTVs, and other off-road vehicles. Built for adventure, the RAM® Tough-Mirror™ is the perfect addition to any motorcycle in any environment—whether you're cruising down the interstate or pushing limits on technical trails. Each of these motorcycle mirror mounts include 100% genuine RAM® modular ball & socket components to guarantee a secure connection so you can focus on riding. The RAM® Tough-Mirror™ is designed to be aerodynamic, cut through wind resistance, and take on rough riding.

## Complete Kits

[FIND YOUR KIT](#)

All kits include M10-1.25 bases—explore kit options with medium or long double socket arms and reverse adapters for your specific bike.



**RAM-B-349-C-465RL**  
RAM® Tough-Mirror™ Kit with Long Arms



**RAM-B-349-465RL**  
RAM® Tough-Mirror™ Kit with Medium Arms



**RAM-B-349-RTA-C-465RL**  
RAM® Tough-Mirror™ Kit with Reverse Adapter + Long Arms



**RAM-B-349-M1015-C-465RL**  
RAM® Tough-Mirror™ Kit with M10-1.5 Adapters + Long Arms

### SEEN IN THIS PHOTO:

**RAM-B-349-C-465RL**  
RAM® Tough-Mirror™ Kit with M10-1.25 Bases



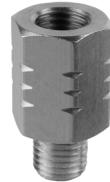
## Thread Adapters & Accessories



**RAM-M10125-M1015**  
Female M10-1.25 to Male  
M10-1.5 Thread Adapter



**RAM-M10125-TE**  
M10-1.25 Thread Extension  
20mm Long



**RAM-M10125-RTA**  
M10-1.25 Reverse Thread Adapter



**RAP-S-KNOB3U**  
RAM® Pin-Lock™ Security Knob  
*Replaces your arm's standard  
knob for theft deterrence*



### Genuine RAM® Components

The only rugged mirrors on the market consisting of 100% genuine RAM® components. Backed by a lifetime warranty.

### Intentionally Designed

Designed by the RAM® Mounts in-house engineering team, the Tough-Mirror™ offers industry-leading visibility with its large mirror surface area.

### Aerodynamic Shape

The sleek shape of the Tough-Mirror™ was designed with aerodynamics in mind to reduce wind resistance, enabling riders to experience enhanced stability and fuel efficiency.

[FIND YOUR KIT](#)



# RAM® VIBE-SAFE™

**NEW**

The RAM® Vibe-Safe™ was meticulously crafted with a focus on safeguarding electronic devices. This innovative accessory features damping technology that effectively absorbs and dissipates vibrations across a wide range of frequencies. The RAM® Vibe-Safe™ reflects a commitment to meeting the diverse needs of our community who rely on their electronic devices while enjoying the freedoms of the open road.

## Complete Kits

[EXPLORE VIBE-SAFE™](#)

### Low-Profile Tough-Claw™



**RAM-HOL-UN7-462-400**  
RAM® X-Grip® Kit for Small Phones



**RAM-HOL-UN10-462-400**  
RAM® X-Grip® Kit for Large Phones

### Brake/Clutch Reservoir & Handlebar Kits



**RAM-B-174-UN7-462**  
RAM® X-Grip® Kit for Small Phones



**RAM-B-174-UN10-462**  
RAM® X-Grip® Kit for Large Phones

### U-Bolt Kits

Explore the full range of Vibe-Safe™ U-Bolt kits, including options with short or medium length arms.



**RAM-B-149Z-A-PD4-462**  
RAM® Quick-Grip™ Kit with Short Arm



**RAM-B-149Z-A-UN7-462**  
RAM® X-Grip® Kit for Small Phones with Short Arm



**RAM-B-149Z-UN10-462**  
RAM® X-Grip® Kit for Large Phones with Medium Arm





IN THIS PHOTO:

**RAM-M-B-149Z-A-PD4-462**  
 RAM® Quick-Grip™ XL Phone Mount with  
 e-Safe™ & U-Bolt Base



IN THIS PHOTO:

**RAM-M-HOL-UN10-462-400**  
 RAM® X-Grip® Phone Mount with  
 e-Safe™ & Small Tough-Claw™



SEEN IN THIS PHOTO:

**RAM-B-400-A-GOP1U**

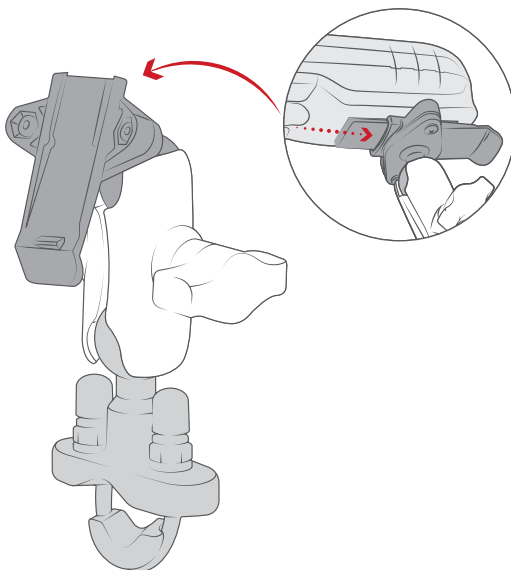
RAM® Tough-Claw™ Mount with Action Camera Adapter



# SNOWMOBILE

## TOP SOLUTIONS

No dirt? No problem. Snowmobiles are much like ATVs with a plethora of handlebar mounts to choose from. Insure yourself out on the snow with GPS tracking mounts and handheld radio mounts in those hairy situations where you get stuck, or worse. RAM® Mounts carries the most trusted products for securing your devices when you truly need them, for just about any environment or application.



Holder secures any Garmin handheld device with an integrated spine connection



**RAM-B-149Z-A-PD4U**  
RAM® Quick-Grip™ U-Bolt Kit



**RAM-B-149Z-A-GA76U**  
Spine Clip Adapter U-Bolt Kit



**RAM-B-400-A-GOP1U**  
Action Camera Tough-Claw™ Kit



**RAM-400-B-UN8U**  
RAM® X-Grip® 8" Tablet Tough-Claw™ Kit



SEEN IN THIS PHOTO:

**RAP-460-UN7U**

RAM® X-Grip® Phone Mount with Tough-Strap™



# MOUNTAIN BIKE/E-BIKE TOP SOLUTIONS

BUILD YOUR KIT WITH THE  
**RAM® MOUNT BUILDER**

From the RAM® Tough-Strap™ to the Tough-Claw™, RAM® offers low profile mounting solutions for any bike's handlebars. The Tough-Strap™ includes two different size straps for compatibility with various sized handlebars, is available in kits with our most popular device holders, and can also be paired with your favorite components with the standalone Tough-Strap™ base. Secure both the Tough-Strap™ and Tough-Claw™ low-profile kits to handlebars with a simple twist of a knob.

## Popular Components & Kits

RAM® Tough-Strap™

[EXPLORE TOUGH-STRAP™](#)



**RAP-B-460U**

Tough-Strap™ Handlebar Base



**RAP-460-UN7U**

RAM® X-Grip® Tough-Strap™ Kit



**RAP-B-460-A-PD4U**

Quick-Grip™ Tough-Strap™ Kit



**RAP-B-460-A-GOP1U**

Action Camera Tough-Strap™ Kit

# TOP SOLUTIONS

Low-Profile Tough-Claw™

[EXPLORE TOUGH-CLAW™](#)



**RAM-HOL-UN7-404-2U**

RAM® X-Grip® Tough-Claw™ Kit for Small Phones



**RAM-HOL-UN10-404-2U**

RAM® X-Grip® Tough-Claw™ Kit for Large Phones



**RAM-HOL-PD4-400-1U**

Quick-Grip™ Tough-Claw™ Kit



# ACCESSORIES

## TOP SOLUTIONS

### SWIVEL ARMS & ARM ACCESSORIES



**RAP-BC-201U**

Swivel Arm for Connecting B & C Size Arms



**RAP-B-200-2U**

Double Socket Swivel & Ratchet Arm



**RAP-B-200-12U**

Double Socket Swivel Arm



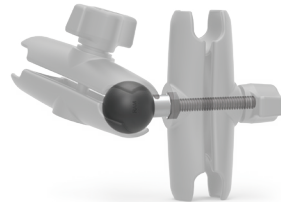
**RAP-S-KNOB3U**

Pin-Lock™ Security Knob for B Size Arms



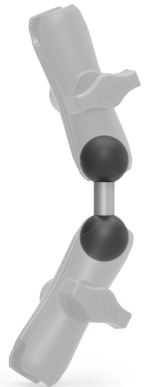
**RAP-S-KNOB5U**

Pin-Lock™ Security Knob for C Size Arms



**RAM-B-273U**

Add-A-Ball™ for B Size Arms



**RAM-B-230U**

Double Ball Adapter



ACCESSORIES CONTINUED

# TOP SOLUTIONS BASES & ADD-ONS



**RAM-B-217U**  
Double Ball Adapter with Round Base



**RAP-431U**  
Vertical Tie Down Track Accessory



**RAM-B-MAG66U**  
Tough-Mag™ Magnetic Ball Base



**RAM-B-152-339**  
LED Spotlight Magnetic Base Kit



**RAP-B-379-25201L-A-2520**  
Tough-Tap™ Trail Cam Mount



**RAM-B-132-400U**  
Level Cup™ Tough-Claw™ Kit



INTRO  
DEVICE HOLDERS  
IN-VEHICLE MOUNTING  
ATV/UTV  
DIRT BIKE/DUAL SPORT  
SNOWMOBILE  
MOUNTAIN BIKE/E-BIKE  
ACCESSORIES & MORE



# RAM<sup>®</sup> MOUNTS

rammount.com  
1.800.497.7479  
sales@rammount.com



IntelliSkin<sup>®</sup>

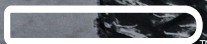


GDS<sup>®</sup> TECH

GDS<sup>®</sup>, IntelliSkin<sup>®</sup>, GDS<sup>®</sup> Tech<sup>®</sup>, GDS<sup>®</sup> Technology<sup>®</sup>, GDS<sup>®</sup> Green<sup>™</sup>, GDS<sup>®</sup> Reach<sup>™</sup>, and GDS<sup>®</sup> Compatible<sup>™</sup> are trademarks or registered trademarks of National Products Inc.

The distinctive D Shape<sup>™</sup> of the GDS<sup>®</sup> connector is a trademark of National Products Inc.

PATENTS AND TRADEMARKS  
WWW.RAMMOUNT.COM/IP



™



®

RAM<sup>®</sup> double socket arms with their distinctive Hourglass Shape are recognized globally as a symbol of the reliability, quality, and durability of this line of products. The Hourglass Shape is a registered trademark of National Products Inc.



™

The distinctive RAM<sup>®</sup> X-Grip<sup>®</sup> product shape is a trademark of National Products Inc.



™

Look for the highly recognizable Double Delta<sup>™</sup> trademark, the symbol of quality and reliability.